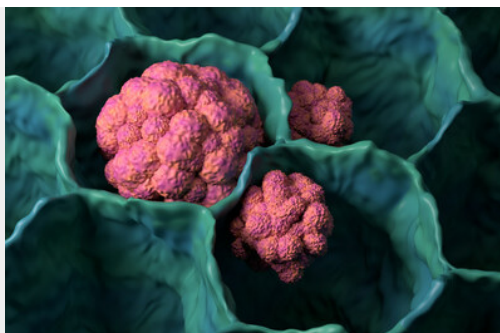


CYTOIMMUNE THERAPEUTICS EXPANDS PHASE 1 TRIAL OF CYTO-102

Posted on December 14, 2023



Phase 1 study of CYTO-102 with atezolizumab (Tecentriq®) at Chan Soon-Shiong Institute for Medicine pioneers new avenues in cancer therapy

TOA BAJA, Puerto Rico, Dec. 14, 2023 [PRNewswire-PRWeb](#) - CytolImmune Therapeutics announces today a significant extension of its ongoing Phase 1 clinical trial evaluating CYTO-102, now encompassing an additional study site at the Chan Soon-Shiong Institute for Medicine (CSSIFM) in El Segundo, CA. In a supply agreement, Roche has committed to supplying its anti-PD-L1 checkpoint inhibitor, atezolizumab, for use in conjunction with CYTO-102 in this expanded trial.

CYTO-102 consists of PD-L1-positive genetically modified natural killer (NK) cells secreting soluble IL-15 that are tumor-reactive (TRACK-NKTM cells). CYTO-102 is being assessed as both a monotherapy and in combination with Tecentriq in patients with relapsed/refractory non-small cell lung cancer (NSCLC). The study enrolled the first 6 patients at City of Hope and will now enroll an additional 18 patients at CSSIFM.

Expanding our Phase 1 trial to CSSIFM will also allow us to extend this promising therapy to more patients.

"We are pleased to partner with Roche to evaluate the potential synergies of combining CYTO-102 and atezolizumab," says Jose Eduardo Vidal, Ph.D., Chief Executive Officer of CytolImmune Therapeutics. "Expanding our Phase 1 trial to CSSIFM will also allow us to extend this promising therapy to more patients. CSSIFM's patient-centered approach and commitment to advancing cancer care aligns with our mission."

CSSIFM offers state-of-the-art cancer care with a focus on immuno-oncology and personalized medicine. The center's experienced staff and access to clinical trials provide patients with powerful new treatment options. They have infused over 1,000 doses of NK cells to patients with cancer and infectious diseases.

"We are excited to collaborate with CytolImmune on this innovative cellular therapy," says Dr. Chaitali Nangia, M.D., Co-Director of Oncology and Principal Investigator of the study at CSSIFM. "Our goal is to provide patients access to groundbreaking new treatments. We believe CYTO-102 holds great potential for patients with NSCLC and other solid tumors."

The Phase 1 trial aims to evaluate the safety, tolerability, and biological effectiveness of CYTO-102. For more details on the study and its extended scope, visit [NCT05334329](https://clinicaltrials.gov/ct2/show/study/NCT05334329).

About CytolImmune Therapeutics:

CytolImmune Therapeutics is at the forefront of a novel natural killer cell therapy for lung cancer, currently in phase 1 clinical trials. In addition, we are now offering cell therapy development and clinical manufacturing services to both biotechnology companies and academia. Our state-of-the-art clinical cell manufacturing facility in Toa Baja, Puerto Rico, is custom built to support the development and commercialization of cutting-edge T cell or NK cell therapies. At CytolImmune, we are dedicated to fostering collaborations that drive the future of cell therapy and improve the lives of cancer patients. Discover how our expertise in cell therapy development and clinical manufacturing can accelerate your path to success. For additional information, [contact us](#).

Media Contact

Albert Stichka, Elkordy Global Strategies, 1 6192544768,
albert@elkordyglobal.com